



**GE Healthcare
Project Management**

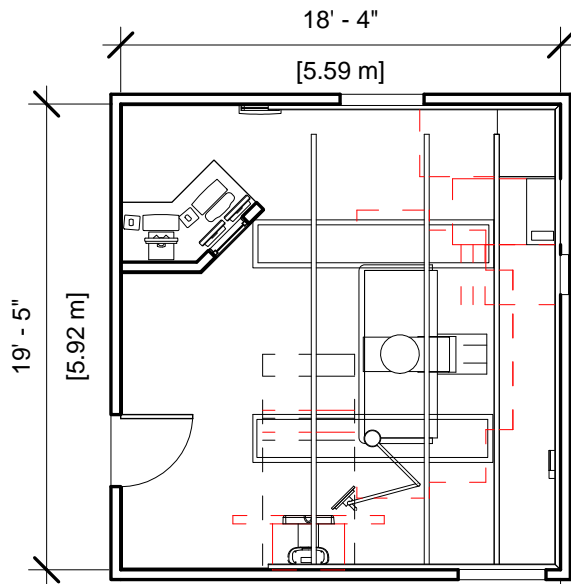
GE Healthcare has made reasonable efforts to ensure this BIM file conforms to requirements of the applicable pre-installation manual. This BIM file was produced to assist with site planning and is not intended for construction or final building modeling. GE Healthcare is not responsible for any damages resulting from use of such file for construction or final building modeling purposes. Compliance with all applicable local, state, and federal laws and regulations is the responsibility of the customer or its designated architects and engineers. Please keep in mind the information in this BIM file is dynamic and is subject to change without notice. It is the responsibility of the customer or its designated architect(s) and engineer(s) to ensure they have the latest equipment or product information.

P500D with MAGIC PC - RENDERING

Project number	2-58
Date	07.FEB.17
Drawn by	GENPACT
Checked by	

A-1

Scale 12" = 1'-0"



Specialty Equipment Schedule		
Description	Weight (lbs)	BTU
EXAM ROOM		
LONGITUDINAL STATIONARY RAIL	68	0
CABLE DRAPE RAIL	180	0
XT RADIOGRAPHIC SUSPENSION WITH INBOARD MOUNTING	559	501
DR IMAGING CABINET	37	477
DR IMAGING CONSOLE	28	525
DETECTOR BIN - WALL MOUNT	33	
ONE LCD MONITOR SUSPENSION ON XT INBOARD BRIDGE	282	68
PRECISION R&F TABLE WITH INTELLIGENT DIGITAL DEVICE	3443	426
SYSTEMS CABINET	881	2457
POSITIONER CABINET	685	3413
80 AMP - MAIN DISCONNECT, REFERENCE JUNCTION POINT 'A' ON SHEET E1 FOR DETAILED DESCRIPTION. CAT. NO. E4502ST OR WITH AUTO RESTART E4502RP. (20 W x 48 H x 6.68 IN. D) [110AMP MAIN DISCONNECT E4502RS OR AUTO RESTART E4502SA ALSO AVAILABLE.]	0	0
OPERATORS CONSOLE	74	1235
PRECISION IUI ACCESSORY ASSEMBLY	15	0
SG-80 CHEST UNIT WITH KNEE EXTENSION	427	0
TETHER INTERFACE BOX	15	10



GE Healthcare
Project Management

GE Healthcare has made reasonable efforts to ensure this BIM file conforms to requirements of the applicable pre-installation manual. This BIM file was produced to assist with site planning and is not intended for construction or final building modeling. GE Healthcare is not responsible for any damages resulting from use of such file for construction or final building modeling purposes. Compliance with all applicable local, state, and federal laws and regulations is the responsibility of the customer or its designated architects and engineers. Please keep in mind the information in this BIM file is dynamic and is subject to change without notice. It is the responsibility of the customer or its designated architect(s) and engineer(s) to ensure they have the latest equipment or product information.

P500D with MAGIC PC - PLAN & SCHEDULE

Project number	2-58
Date	07.FEB.17
Drawn by	GENPACT
Checked by	

A-2

Scale 1/8" = 1'-0"

Hold the Left Click for Rotating around
Use the Scroll for Zooming in and out



2-58 - Precision 500D



GE Healthcare

[Click for Site Planning Support](#)