



**GE Healthcare**  
**Project Management**

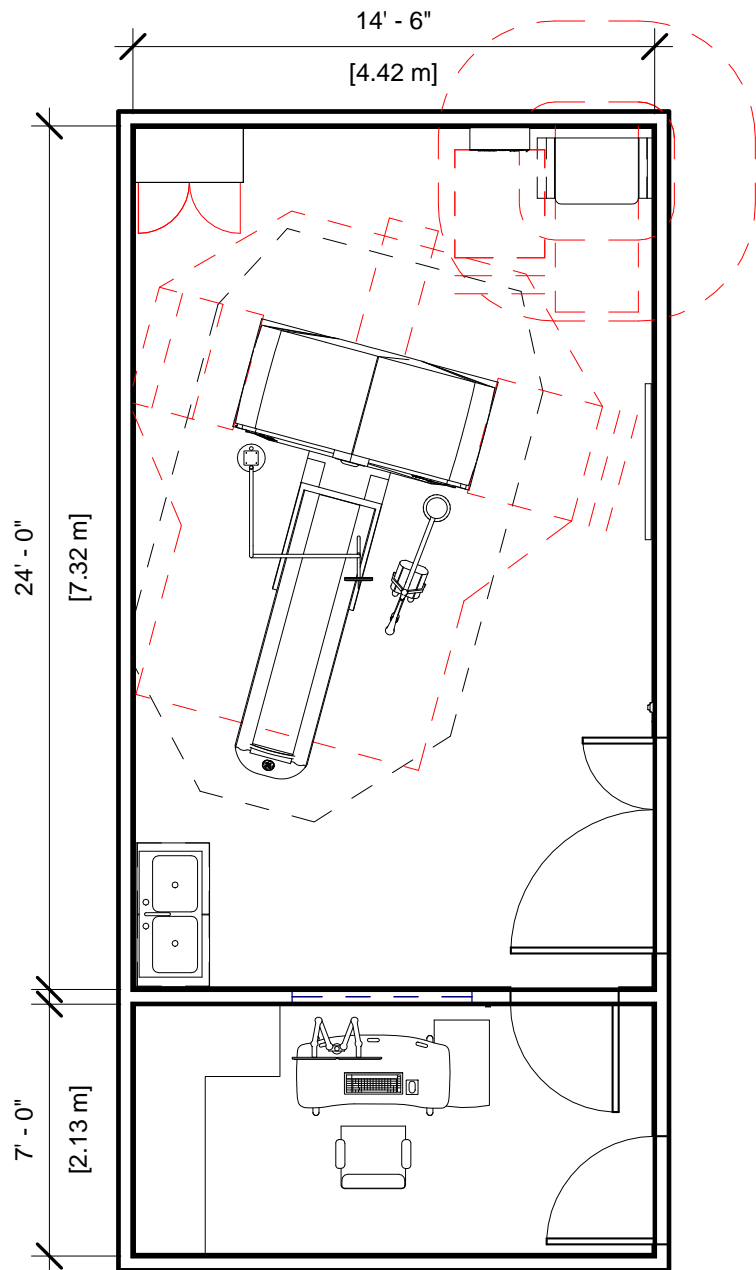
GE Healthcare has made reasonable efforts to ensure this BIM file conforms to requirements of the applicable pre-installation manual. This BIM file was produced to assist with site planning and is not intended for construction or final building modeling. GE Healthcare is not responsible for any damages resulting from use of such file for construction or final building modeling purposes. Compliance with all applicable local, state, and federal laws and regulations is the responsibility of the customer or its designated architects and engineers. Please keep in mind the information in this BIM file is dynamic and is subject to change without notice. It is the responsibility of the customer or its designated architect(s) and engineer(s) to ensure they have the latest equipment or product information.

**OPTIMA CT520 - RENDERING**

<b>Project number</b>	<b>6-94</b>
<b>Date</b>	<b>11.MAY.17</b>
<b>Drawn by</b>	<b>GENPACT</b>
<b>Checked by</b>	

**A-1**

**Scale 12" = 1'-0"**



### Specialty Equipment Schedule

Description	Weight (lbs)	BTU
<b>CONTROL ROOM</b>		
OPERATORS CONSOLE/CABINET	273	3699
<b>EXAM ROOM</b>		
CT TABLE	1567	1023
CT520 GANTRY	3783	18771
POWER DISTRIBUTION UNIT	740	5119
STORAGE CABINET	99	0
MAIN DISCONNECT CONTROL	90	0
INJECTOR HEAD ON OVERHEAD COUNTERPOISED SUSPENSION	79	0
MONITOR ON OVERHEAD COUNTERPOISED SUSPENSION	61	300



**GE Healthcare  
Project Management**

GE Healthcare has made reasonable efforts to ensure this BIM file conforms to requirements of the applicable pre-installation manual. This BIM file was produced to assist with site planning and is not intended for construction or final building modeling. GE Healthcare is not responsible for any damages resulting from use of such file for construction or final building modeling purposes. Compliance with all applicable local, state, and federal laws and regulations is the responsibility of the customer or its designated architects and engineers. Please keep in mind the information in this BIM file is dynamic and is subject to change without notice. It is the responsibility of the customer or its designated architect(s) and engineer(s) to ensure they have the latest equipment or product information.

### OPTIMA CT520 PLAN & SCHEDULE

Project number	6-94
Date	11.MAY.17
Drawn by	GENPACT
Checked by	

**A-2**

Scale 3/16" = 1'-0"

Hold the Left Click for Rotating around  
Use the Scroll for Zooming in and out



6-94 - Optima CT 520 1.5



GE Healthcare

[Click for Site Planning Support](#)