



**GE Healthcare**  
**Project Management**

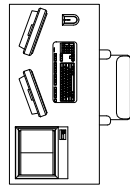
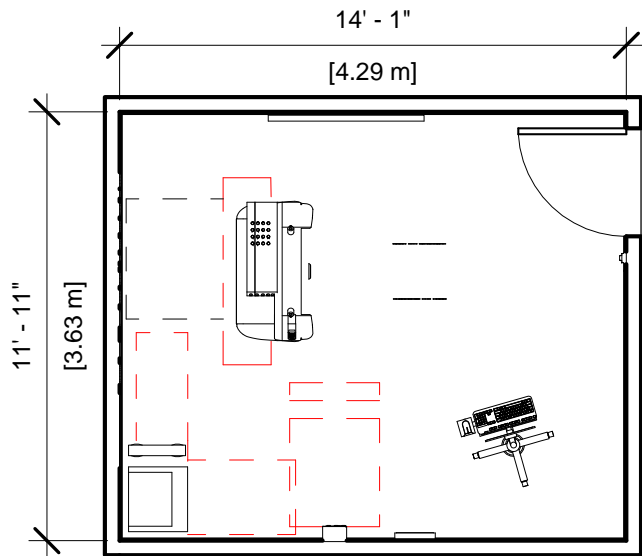
GE Healthcare has made reasonable efforts to ensure this BIM file conforms to requirements of the applicable pre-installation manual. This BIM file was produced to assist with site planning and is not intended for construction or final building modeling. GE Healthcare is not responsible for any damages resulting from use of such file for construction or final building modeling purposes. Compliance with all applicable local, state, and federal laws and regulations is the responsibility of the customer or its designated architects and engineers. Please keep in mind the information in this BIM file is dynamic and is subject to change without notice. It is the responsibility of the customer or its designated architect(s) and engineer(s) to ensure they have the latest equipment or product information.

**DISCOVERY NM 530c - RENDERING**

<b>Project number</b>	<b>7-70</b>
<b>Date</b>	<b>19.JULY.17</b>
<b>Drawn by</b>	<b>GENPACT</b>
<b>Checked by</b>	

**A-1**

**Scale 12" = 1'-0"**



## Specialty Equipment Schedule

Description	Weight (lbs)	BTU
XELERIS WORKSTATION	55	255
TABLE	0	0
COLOR PRINTER	0	1054
<b>EXAM ROOM</b>		
VENTRI TABLE (PREMIUM TABLE)	705	2047
DISCOVERY NM530c GANTRY	1432	2150
VENTRI GANTRY	1432	2904
DISCOVERY NM530c GANTRY	1432	2150
DISCOVERY NM530c GANTRY	1432	2150
UPS SYSTEM	33	4436
MAIN DISCONNECT, REFERENCE JUNCTION POINT 'A' ON SHEET E1 FOR DETAILED DESCRIPTION.	0	0
DISCOVERY NM530c INTEGRATED POWER SUPPLY	171	204
DISCOVERY NM530c INTEGRATED POWER SUPPLY	171	204
INTEGRATED POWER SUPPLY	171	341
DISCOVERY NM530c INTEGRATED POWER SUPPLY	171	204
DISCOVERY NM530c INTEGRATED POWER SUPPLY	171	204
DISCOVERY NM530c INTEGRATED POWER SUPPLY	171	204
DISCOVERY NM530c INTEGRATED POWER SUPPLY	171	204
OPERAORS CONSOLE		



**GE Healthcare  
Project Management**

GE Healthcare has made reasonable efforts to ensure this BIM file conforms to requirements of the applicable pre-installation manual. This BIM file was produced to assist with site planning and is not intended for construction or final building modeling. GE Healthcare is not responsible for any damages resulting from use of such file for construction or final building modeling purposes. Compliance with all applicable local, state, and federal laws and regulations is the responsibility of the customer or its designated architects and engineers. Please keep in mind the information in this BIM file is dynamic and is subject to change without notice. It is the responsibility of the customer or its designated architect(s) and engineer(s) to ensure they have the latest equipment or product information.

### DISCOVERY NM 530c - PLAN & SCHEDULE

<b>Project number</b>	7-70
<b>Date</b>	19.JULY.17
<b>Drawn by</b>	GENPACT
<b>Checked by</b>	

A-2

Scale 3/16" = 1'-0"

Hold the Left Click for Rotating around  
Use the Scroll for Zooming in and out



7-70 -Discovery NM 530c



GE Healthcare

[Click for Site Planning Support](#)