



GE Healthcare
Project Management

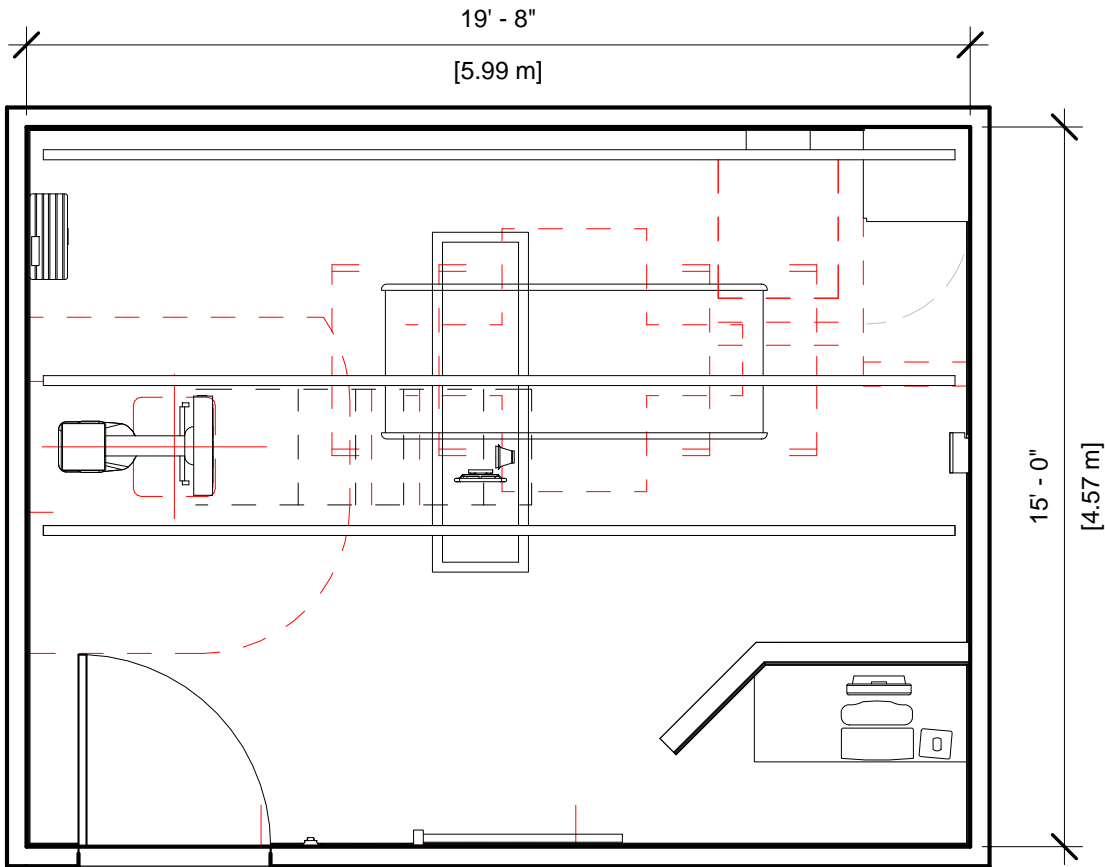
GE Healthcare has made reasonable efforts to ensure this BIM file conforms to requirements of the applicable pre-installation manual. This BIM file was produced to assist with site planning and is not intended for construction or final building modeling. GE Healthcare is not responsible for any damages resulting from use of such file for construction or final building modeling purposes. Compliance with all applicable local, state, and federal laws and regulations is the responsibility of the customer or its designated architects and engineers. Please keep in mind the information in this BIM file is dynamic and is subject to change without notice. It is the responsibility of the customer or its designated architect(s) and engineer(s) to ensure they have the latest equipment or product information.

OPTIMA XR646- RENDERING

Project number	1-150
Date	5.JUNE.17
Drawn by	GENPACT
Checked by	

A-1

Scale 12" = 1'-0"



Specialty Equipment Schedule

Description	Weight (lbs)	BTU
EXAM ROOM		
DONGLE	4	0
SYSTEM CABINET	705	2440
OPERATORS CONSOLE	61	604
GRID HOLDER	30	0
XR656 G2/646 DIGITAL ELEVATING TABLE	970	372
TRAD DETECTOR CHEST UNIT	595	136
MAIN DISCONNECT CONTROL	0	0
TETHER INTERFACE BOX	15	10
XT RADIOGRAPHIC SUSPENSION WITH INBOARD MOUNTING	764	105
CABLE DRAPE RAIL	182	0
LONGITUDINAL STATIONARY RAIL	68	0
PARTIAL SYSTEM UNINTERRUPTIBLE POWER SUPPLY	77	30



**GE Healthcare
Project Management**

GE Healthcare has made reasonable efforts to ensure this BIM file conforms to requirements of the applicable pre-installation manual. This BIM file was produced to assist with site planning and is not intended for construction or final building modeling. GE Healthcare is not responsible for any damages resulting from use of such file for construction or final building modeling purposes. Compliance with all applicable local, state, and federal laws and regulations is the responsibility of the customer or its designated architects and engineers. Please keep in mind the information in this BIM file is dynamic and is subject to change without notice. It is the responsibility of the customer or its designated architect(s) and engineer(s) to ensure they have the latest equipment or product information.

OPTIMA XR646-FLOOR PLAN & SCHEDULE

Project number	1-150
Date	5.JUNE.17
Drawn by	GENPACT
Checked by	

A-2

Scale 1/4" = 1'-0"

Hold the Left Click for Rotating around
Use the Scroll for Zooming in and out



1-150 - Discovery XR646



GE Healthcare

[Click for Site Planning Support](#)