



**GE Healthcare
Project Management**

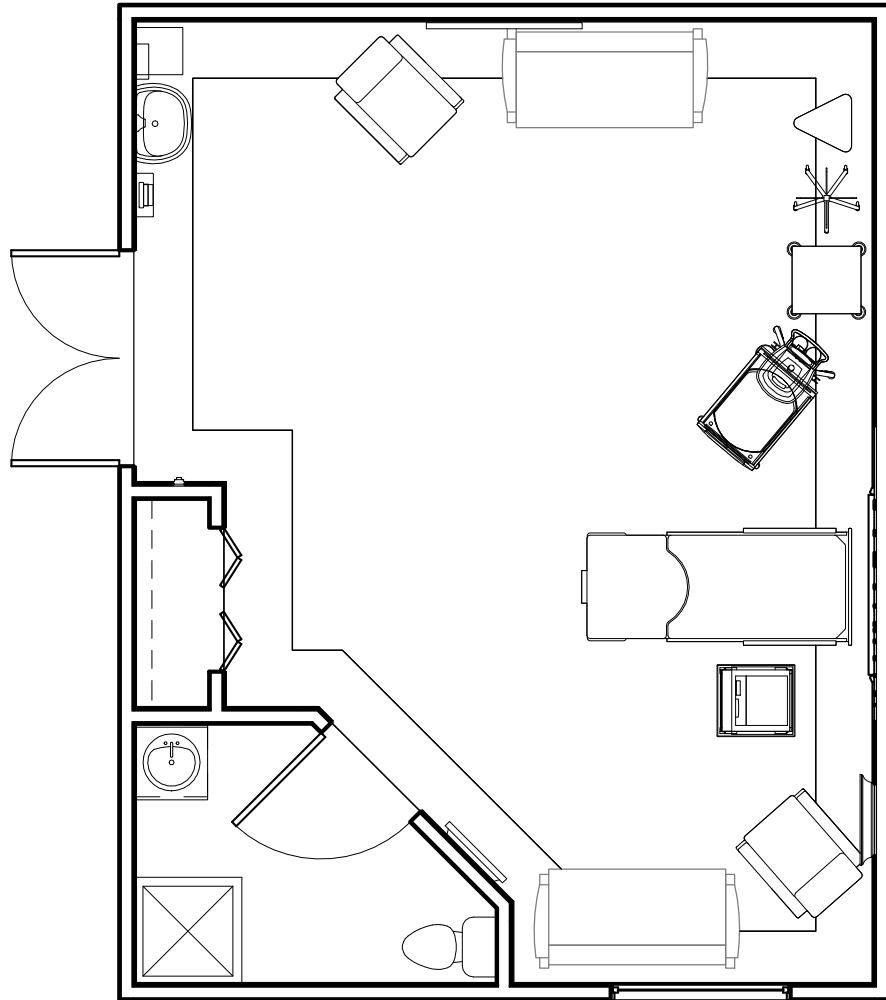
GE Healthcare has made reasonable efforts to ensure this BIM file conforms to requirements of the applicable pre-installation manual. This BIM file was produced to assist with site planning and is not intended for construction or final building modeling. GE Healthcare is not responsible for any damages resulting from use of such file for construction or final building modeling purposes. Compliance with all applicable local, state, and federal laws and regulations is the responsibility of the customer or its designated architects and engineers. Please keep in mind the information in this BIM file is dynamic and is subject to change without notice. It is the responsibility of the customer or its designated architect(s) and engineer(s) to ensure they have the latest equipment or product information.

GE Healthcare-Maternal/Infant Care - Rendering

Project number	MIC - LND
Date	09.FEB.17
Drawn by	GENPACT
Checked by	

A-1

Scale 12" = 1'-0"



Specialty Equipment Schedule

Description	Weight (lbs)	BTU
Exam Room		
Warmer_Infant_Care_System	220	0
Waste Can, Bio-Hazardous	7 lbs	
Stand, IV, Stainless Steel	11 lbs	
Hamper, Linen	24 lbs	
Disposal, Sharps, Wall Mount	5 lbs	
Dispenser, Soap, Wall Mounted	3.00 lbs.	
Dispenser, Paper Towel, Surface Mount	6 lbs	
Chair, Clinical, Recliner, Treatment	127 lbs	
Cart, Supply, Modular	50 lbs	
Bed, Birthing	480	
Television, 25-27 in, Flat Panel	18 lbs	
Chair, Clinical, Recliner, Treatment	127 lbs	
Corometrics 250cx	24	0
Corometrics Fetal Monitor for Corometrics Cart	-	



**GE Healthcare
Project Management**

GE Healthcare has made reasonable efforts to ensure this BIM file conforms to requirements of the applicable pre-installation manual. This BIM file was produced to assist with site planning and is not intended for construction or final building modeling. GE Healthcare is not responsible for any damages resulting from use of such file for construction or final building modeling purposes. Compliance with all applicable local, state, and federal laws and regulations is the responsibility of the customer or its designated architects and engineers. Please keep in mind the information in this BIM file is dynamic and is subject to change without notice. It is the responsibility of the customer or its designated architect(s) and engineer(s) to ensure they have the latest equipment or product information.

GE Healthcare-Maternal/Infant Care - Plan & Schedule

Project number	MIC - LND
Date	09.FEB.17
Drawn by	GENPACT
Checked by	

A-2

Scale 3/16" = 1'-0"

Hold the Left Click for Rotating around
Use the Scroll for Zooming in and out



Maternal/Infant Care - L & D



GE Healthcare

[Click for Site Planning Support](#)