



GE Healthcare
Project Management

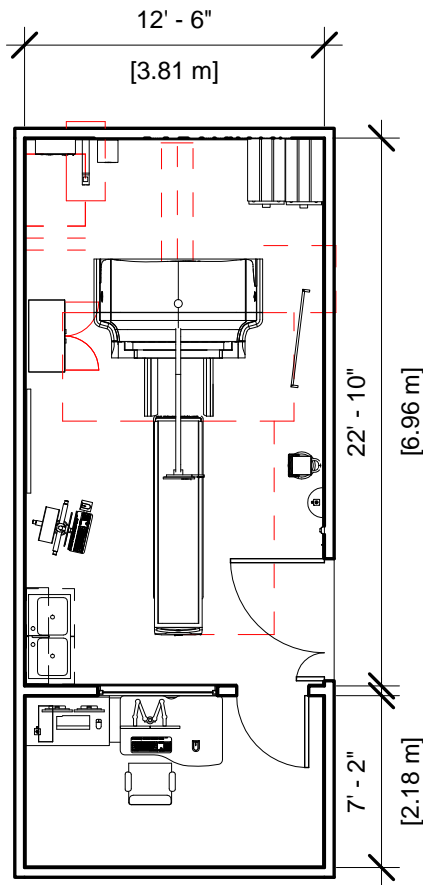
GE Healthcare has made reasonable efforts to ensure this BIM file conforms to requirements of the applicable pre-installation manual. This BIM file was produced to assist with site planning and is not intended for construction or final building modeling. GE Healthcare is not responsible for any damages resulting from use of such file for construction or final building modeling purposes. Compliance with all applicable local, state, and federal laws and regulations is the responsibility of the customer or its designated architects and engineers. Please keep in mind the information in this BIM file is dynamic and is subject to change without notice. It is the responsibility of the customer or its designated architect(s) and engineer(s) to ensure they have the latest equipment or product information.

DISCOVERY NMCT670 - RENDERING

Project number	7-84
Date	19.JULY.17
Drawn by	GENPACT
Checked by	

A-1

Scale 12" = 1'-0"



Specialty Equipment Schedule

Description	Weight (lbs)	BTU
CONTROL ROOM		
FREEDOM WORKSPACE LARGE TABLE	147	8191
ESTOP PUSHBUTTON	0	0
XELERIS WORK STATION	55	255
EXAM ROOM		
STORAGE CABINET	99	0
R-WAVE RECORDER	6	0
OPERATORS CONSOLE ON CART		0
DISCOVERY NM/CT 670 GANTRY (CT)	3899	18771
MAIN DISCONNECT CONTROL CAT NO. E4502AB (IF A UPS IS NOT OR WILL NOT BE ORDERED, THE E4502AD CAN BE USED.)	90	0
COLLIMATOR CART	1058	0
COLLIMATOR CART	1058	0
TABLE SWING		0
UPS CONTROL CABINET	39	1740
OPERAORS CONSOLE		
ESTOP PUSHBUTTON	0	0
MOBILE RADIATION SHIELD	0	0



**GE Healthcare
Project Management**

GE Healthcare has made reasonable efforts to ensure this BIM file conforms to requirements of the applicable pre-installation manual. This BIM file was produced to assist with site planning and is not intended for construction or final building modeling. GE Healthcare is not responsible for any damages resulting from use of such file for construction or final building modeling purposes. Compliance with all applicable local, state, and federal laws and regulations is the responsibility of the customer or its designated architects and engineers. Please keep in mind the information in this BIM file is dynamic and is subject to change without notice. It is the responsibility of the customer or its designated architect(s) and engineer(s) to ensure they have the latest equipment or product information.

DISCOVERY NMCT 670 - PLAN & SCHEDULE

Project number	7-84
Date	19.JULY.17
Drawn by	GENPACT
Checked by	

A-2

Scale 1/8" = 1'-0"

Hold the Left Click for Rotating around
Use the Scroll for Zooming in and out



7-84 - Optima NMCT 640



GE Healthcare

[Click for Site Planning Support](#)