



GE Healthcare Project Management

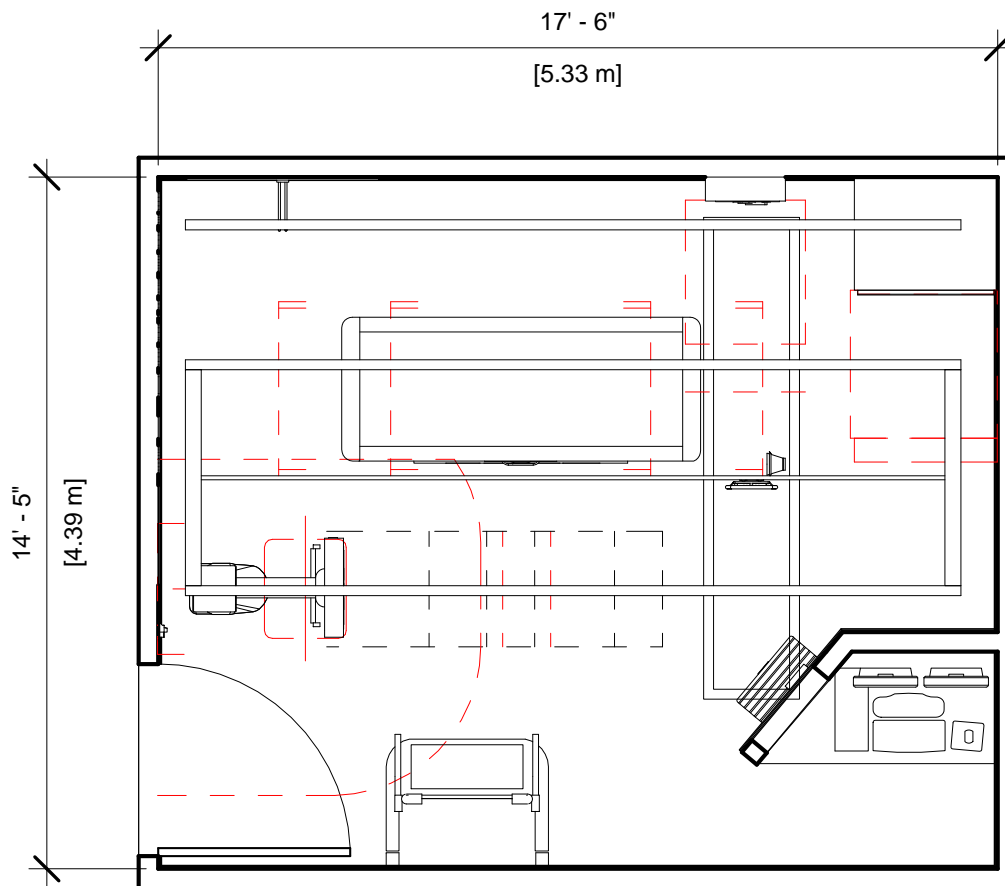
GE Healthcare has made reasonable efforts to ensure this BIM file conforms to requirements of the applicable pre-installation manual. This BIM file was produced to assist with site planning and is not intended for construction or final building modeling. GE Healthcare is not responsible for any damages resulting from use of such file for construction or final building modeling purposes. Compliance with all applicable local, state, and federal laws and regulations is the responsibility of the customer or its designated architects and engineers. Please keep in mind the information in this BIM file is dynamic and is subject to change without notice. It is the responsibility of the customer or its designated architect(s) and engineer(s) to ensure they have the latest equipment or product information.

OPTIMA XR640 - RENDERING

Project number	1-142
Date	02.JUNE.17
Drawn by	GENPACT
Checked by	

A-1

Scale 12" = 1'-0"



Specialty Equipment Schedule

Description	Weight (lbs)	BTU
EXAM ROOM		
TRAD DETECTOR CHEST UNIT	595	109
XT RADIOGRAPHIC SUSPENSION WITH INBOARD MOUNTING	559	501
TRAD DIGITAL ELEVATING TABLE	992	426
TRAD DETECTOR SUPPORT	0	0
SYSTEM CABINET	679	2436
IMAGE PASTING BARRIER	200	0
LONGITUDINAL DRIVE BELT	44	0
MAIN DISCONNECT, REFERENCE JUNCTION POINT 'A' ON SHEET E1 FOR DETAILED DESCRIPTION. CAT. NO. E4502ST OR WITH AUTO RESTART E4502RP. (20 W x 48 H x 6.68 in. D)	0	0
OPERATORS CONSOLE	99	986
GRID HOLDER	30	0
LONGITUDINAL STATIONARY RAIL	68	0
CABLE DRAPE RAIL	180	0



GE Healthcare
Project Management

GE Healthcare has made reasonable efforts to ensure this BIM file conforms to requirements of the applicable pre-installation manual. This BIM file was produced to assist with site planning and is not intended for construction or final building modeling. GE Healthcare is not responsible for any damages resulting from use of such file for construction or final building modeling purposes. Compliance with all applicable local, state, and federal laws and regulations is the responsibility of the customer or its designated architects and engineers. Please keep in mind the information in this BIM file is dynamic and is subject to change without notice. It is the responsibility of the customer or its designated architect(s) and engineer(s) to ensure they have the latest equipment or product information.

OPTIMA XR640 - PLAN & SCHEDULE

Project number	1-142
Date	02.JUNE.17
Drawn by	GENPACT
Checked by	

A-2

Scale 1/4" = 1'-0"

Hold the Left Click for Rotating around
Use the Scroll for Zooming in and out



1-142 - Optima XR640



GE Healthcare

[Click for Site Planning Support](#)