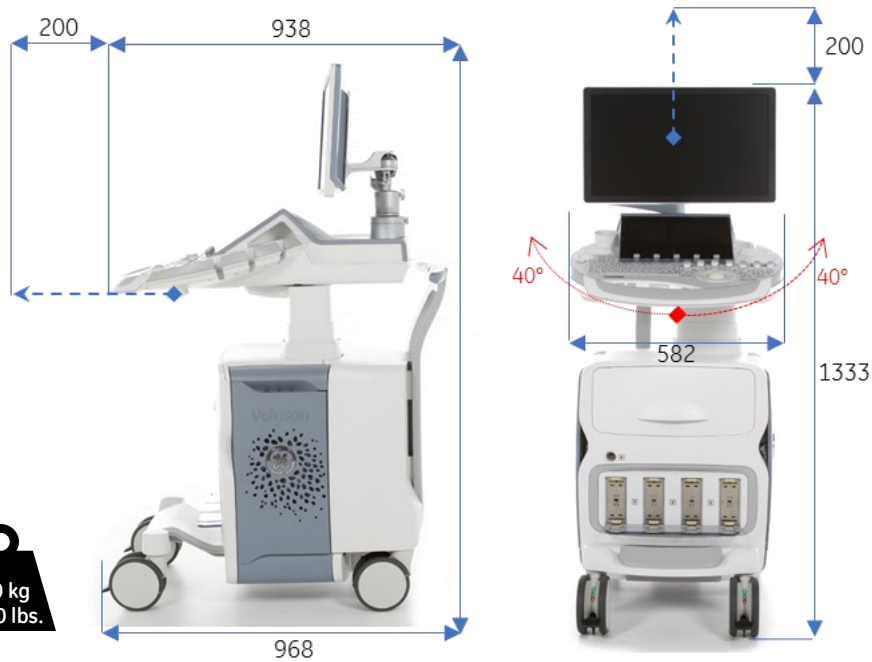


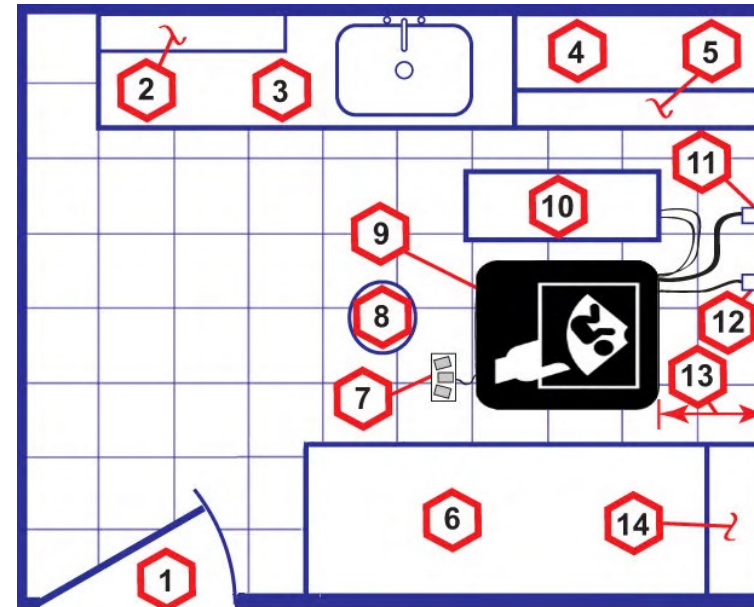
Voluson E6/E8/E10

Physical Dimensions and Weight (mm):

Please Note: The picture may vary according to order configuration.



Recommended Ultrasound Room Layout



1. door – at least 76 cm (2.5 foot / 30 inches)
2. film viewer
3. counter top, sink with hot and cold water, supplies storage
4. linen supply
5. probes/supplies
6. examination table
7. footswitch
8. stool
9. ultrasound system
10. external peripherals
11. dedicated power outlet - circuit breaker protected and easily accessible
12. network interface
13. distance from wall or objects
14. cabinet for software and manuals

External Inputs and Outputs :



1280x1024



1280x800



Pal-720x576
NTSC-720x480



Environmental Requirements

Operating Temperature	10 to 30 C (50 to 86 F)
Operating Humidity	30 to 80% rH, non-condensing
Heat Dissipation	2730 BTU/hour +300 Btu for each person. Without on-board peripherals
Storage Temperature	-10 to 50 C (14 to 122 F)
Storage Humidity	< 90% rH, non-condensing
Lighting	Combination lighting system (dim/bright) is recommended. Keep in mind that lighting controls and dimmers can be a source of EMI which could degrade image quality.

Electrical Specifications

Voltage	100 –240 VAC +- %10 / 50, 60 Hz (+-2%)
Power Consumption	800 VA, including all on board peripherals.
Site Power Outlets	A dedicated AC power outlet must be within reach of the unit without extension cords
Power outage may occur	Requires a dedicated single branch circuit. To avoid circuit overload and possible loss of critical care equipment, make sure you DO NOT have any other equipment operating on the same circuit.
Acoustic Noise Output	max. 60 dB(A)

Please Note: For more information please refer to the product's service & user manuals.