



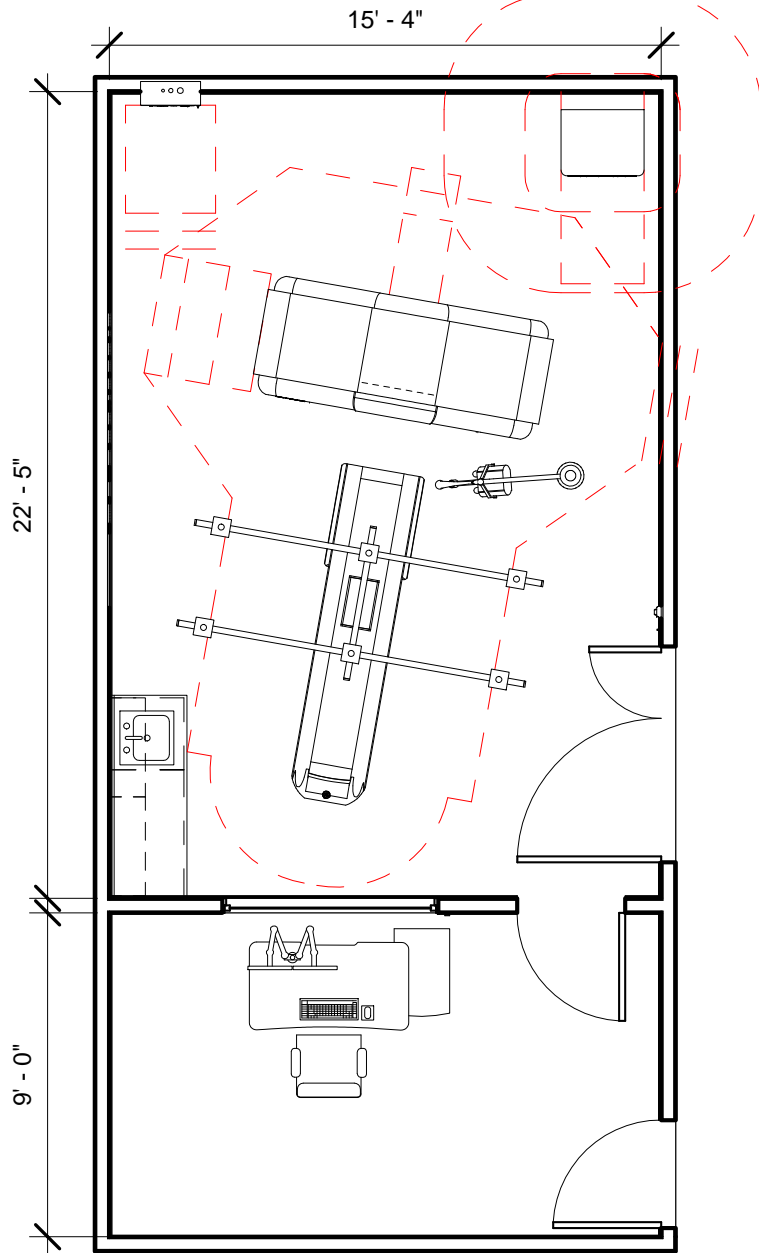
**GE Healthcare  
Project Management**

GE Healthcare has made reasonable efforts to ensure this BIM file conforms to requirements of the applicable pre-installation manual. This BIM file was produced to assist with site planning and is not intended for construction or final building modeling. GE Healthcare is not responsible for any damages resulting from use of such file for construction or final building modeling purposes. Compliance with all applicable local, state, and federal laws and regulations is the responsibility of the customer or its designated architects and engineers. Please keep in mind the information in this BIM file is dynamic and is subject to change without notice. It is the responsibility of the customer or its designated architect(s) and engineer(s) to ensure they have the latest equipment or product information.

**Discovery CT590 - Optima CT580 w/ Bariatric Table - RENDERING**

<b>Project number</b>	<b>6-84</b>
<b>Date</b>	<b>02.NOV.16</b>
<b>Drawn by</b>	<b>Genpact</b>
<b>Checked by</b>	<b>-</b>

**A-1**



Specialty Equipment Schedule		
Description	Weight lbs	BTU
MAIN DISCONNECT	125	0
LARGE TABLE OPERATOR'S CONSOLE	147	8191
POWER DISTRIBUTION UNIT	815	0
DISCOVERY CT590 RT/OPTIMA CT580 (BTU'S INCLUDE GANTRY, TABLE, & PDU)	5350	35007
INJECTOR HEAD ON OVERHEAD COUNTERPOISED SUSPENSION	79	0
GT 2000 650 LBS PATIENT TABLE WITH EXTENDED TABLE TOP	1102	0



**GE Healthcare**  
**Project Management**

GE Healthcare has made reasonable efforts to ensure this BIM file conforms to requirements of the applicable pre-installation manual. This BIM file was produced to assist with site planning and is not intended for construction or final building modeling. GE Healthcare is not responsible for any damages resulting from use of such file for construction or final building modeling purposes. Compliance with all applicable local, state, and federal laws and regulations is the responsibility of the customer or its designated architects and engineers. Please keep in mind the information in this BIM file is dynamic and is subject to change without notice. It is the responsibility of the customer or its designated architect(s) and engineer(s) to ensure they have the latest equipment or product information.

**Discovery CT590 - Optima CT580 w/ Bariatric Table - PLAN**

<b>Project number</b>	<b>6-84</b>
<b>Date</b>	<b>02.NOV.16</b>
<b>Drawn by</b>	<b>Genpact</b>
<b>Checked by</b>	<b>-</b>

**A-2**

**Scale 3/16" = 1'-0"**

Hold the Left Click for Rotating around  
Use the Scroll for Zooming in and out



**Discovery CT590/OPTIMA CT580  
w/ BARIATRIC TABLE**



GE Healthcare

[Click for Site Planning Support](#)