



**GE Healthcare**  
**Project Management**

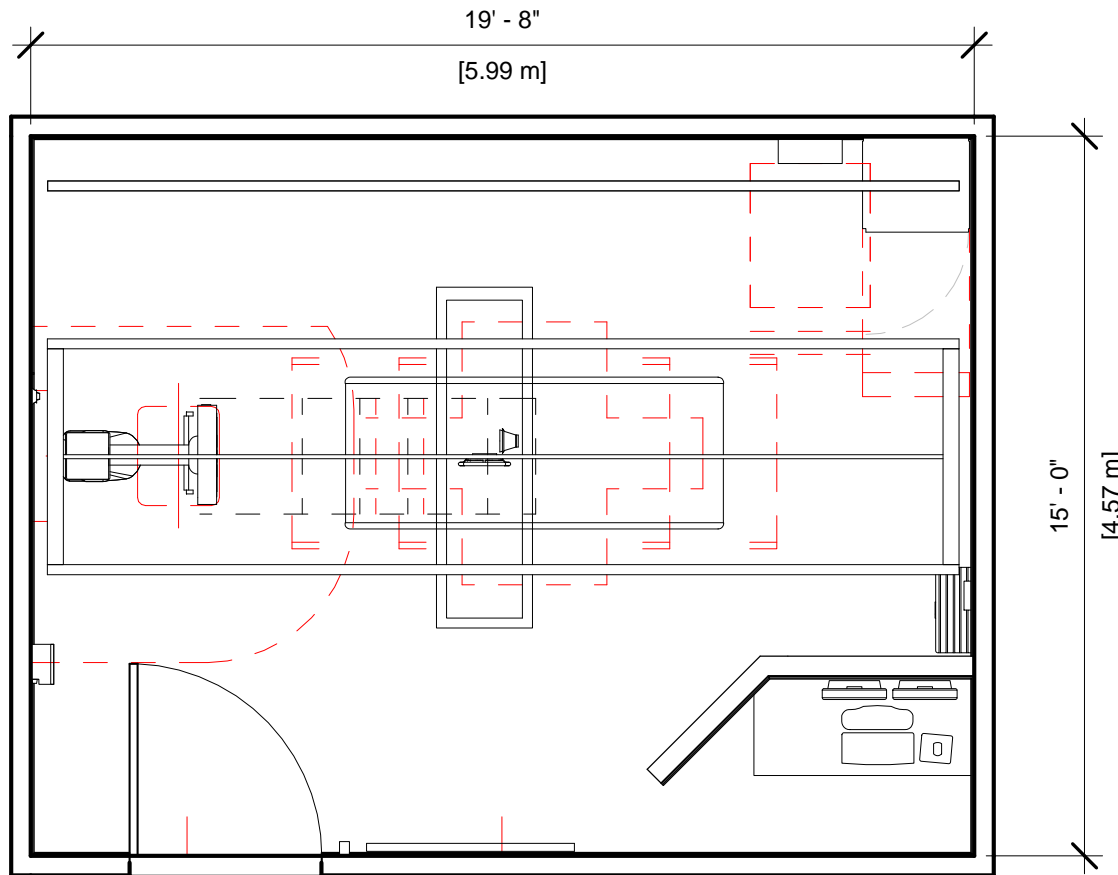
GE Healthcare has made reasonable efforts to ensure this BIM file conforms to requirements of the applicable pre-installation manual. This BIM file was produced to assist with site planning and is not intended for construction or final building modeling. GE Healthcare is not responsible for any damages resulting from use of such file for construction or final building modeling purposes. Compliance with all applicable local, state, and federal laws and regulations is the responsibility of the customer or its designated architects and engineers. Please keep in mind the information in this BIM file is dynamic and is subject to change without notice. It is the responsibility of the customer or its designated architect(s) and engineer(s) to ensure they have the latest equipment or product information.

**DISCOVERY XR656 PLUS - RENDERING**

<b>Project number</b>	<b>1-154</b>
<b>Date</b>	<b>05.JUNE.17</b>
<b>Drawn by</b>	<b>GENPACT</b>
<b>Checked by</b>	

**A-1**

**Scale 12" = 1'-0"**



Specialty Equipment Schedule		
Description	Weight (lbs)	BTU
<b>EXAM ROOM</b>		
DONGLE	4	0
SYSTEM CABINET	705	2440
OPERATORS CONSOLE	79	604
GRID HOLDER	30	0
XR656 G2/646 DIGITAL ELEVATING TABLE	970	372
TRAD DETECTOR CHEST UNIT	595	136
MAIN DISCONNECT CONTROL	0	0
TETHER INTERFACE BOX	15	10
XT RADIOGRAPHIC SUSPENSION WITH INBOARD MOUNTING	787	501
CABLE DRAPE RAIL	180	0
LONGITUDINAL STATIONARY RAIL	68	0
PARTIAL SYSTEM UNINTERRUPTIBLE POWER SUPPLY	77	30
LONGITUDINAL DRIVE BELT	44	0



**GE Healthcare**  
Project Management

GE Healthcare has made reasonable efforts to ensure this BIM file conforms to requirements of the applicable pre-installation manual. This BIM file was produced to assist with site planning and is not intended for construction or final building modeling. GE Healthcare is not responsible for any damages resulting from use of such file for construction or final building modeling purposes. Compliance with all applicable local, state, and federal laws and regulations is the responsibility of the customer or its designated architects and engineers. Please keep in mind the information in this BIM file is dynamic and is subject to change without notice. It is the responsibility of the customer or its designated architect(s) and engineer(s) to ensure they have the latest equipment or product information.

**DISCOVERY XR656 PLUS FLOOR PLAN & SCHEDULE**

Project number	1-154
Date	05.JUNE.17
Drawn by	GENPACT
Checked by	

**A-2**

Scale 1/4" = 1'-0"

Hold the Left Click for Rotating around  
Use the Scroll for Zooming in and out



1-154 - Discovery XR656 Plus



GE Healthcare

[Click for Site Planning Support](#)